

# International Catalina 30/309 Association 2017 National Championship Regatta July 7 – 9, 2017

Hosted by Columbia Yacht Club  
Chicago, IL



## SAILING INSTRUCTIONS

### 1 RULES

- 1.1 The regatta will be governed by the rules as defined in *The Racing Rules of Sailing* (RRS).
- 1.2 The class rules are the *IC30A BYLAWS* (Adopted February 28, 2004) including Appendix 1, ONE DESIGN CLASS SPECIFICATIONS.
- 1.3 If each of the C30 Standard Rig (SR), Tall Rig with Bowsprit (TBS), and C309 sections do not have at least 3 boats they will be combined as one (1) handicap class. (This changes IC30A Bylaw IV A.)

### 2 NOTICES TO COMPETITORS

Notices to competitors will be posted on the official notice board located on [yachtscoring.com](http://yachtscoring.com), as well as on the corkboard attached to the sliding door entrance of the classroom.

### 3 CHANGES TO SAILING INSTRUCTIONS

Any change to the sailing instructions will be posted before 0800 hrs CDT on the day it will take effect, except that any change to the schedule of races will be posted by 2000 hrs CDT on the day before it will take effect.

### 4 SIGNALS MADE ASHORE

- 4.1 Signals made ashore will be displayed on the club flag mast at the top of the club ship.
- 4.2 When flag AP is displayed ashore, “1 minute” is replaced with “not less than 90 minutes” in the race signal AP

### 5 SCHEDULE OF RACES

- 5.1 After a practice race, five (5) races are scheduled for the regatta for each class.
- 5.2 The dates and number of races scheduled for all classes are as follows:

<u>Day</u>	<u>Date</u>	<u>Scheduled</u>
Friday	July 7	1 practice race
Saturday	July 8	3 races
Sunday	July 9	2 races

- 5.3 The scheduled time of the warning signal for the first race each day is 1030 hrs. CDT, except the practice race on Friday, which will be 1730 CDT.
- 5.4 To alert boats that a subsequent race will begin soon after the last boat finishes the preceding race, multiple sounds will signal 1 minute before a warning signal is made.
- 5.5 Flag A displayed, with no sound, while boats are finishing means “No more racing today.”
- 5.6 On Sunday, no warning shall be made after 1330 hrs CDT.

**6 CLASS FLAGS**

- 6.1 Class flags will be:

<u>Class</u>	<u>Boat Flag</u>	<u>Class Flag</u>
Spinnaker Class	Blue	Pennant 5
Jib and Main Class	White	Pennant 8

- 6.2 Each boat’s flag is provided in her registration package and shall be flown on her backstay.

**7 RACING AREA**

Illustration A shows the location of the racing area.

**8 THE COURSES**

Illustration B shows the courses.

**9 MARKS**

- 9.1 Marks will be orange tetrahedrons.
- 9.2 Yellow tetrahedrons will be used to change a leg of the course, subsequent changes will go back to the original mark color.
- 9.3 The start mark will be a yellow circular inflatable.
- 9.4 The finish mark will be a white circular inflatable.

**10 THE START**

- 10.1 The starting line will be between a staff or halyard displaying an orange flag on the race committee signal boat at the starboard end and the course side of port-end starting mark.
- 10.2 Boats whose warning signal has not been made shall avoid the starting area during the starting sequence for other classes

- 10.3 A boat starting later than 15 minutes after her starting signal shall be scored Did Not Start (DNS). This changes rules A4 and A5.
- 10.4 The race committee will attempt to hail any recalled boat on VHF channel 69. Failure to make a broadcast or to time it accurately will not be grounds for redress. This changes rule 62.1(a).

### **11 CHANGE OF THE NEXT LEG OF THE COURSE (Spinnaker Class only)**

To change the next leg of the course, the race committee will lay a new mark of a different color (or move the finishing line) and remove the original mark as soon as practicable. When in a subsequent change a new mark is replaced, it will be replaced by a mark of the original color.

### **12 THE FINISH**

- 12.1 The finishing line will be between a staff or halyard displaying a blue flag on a race committee boat at the starboard end and the course side of port end finishing mark.
- 12.2 For the Cruising class: the race committee finish boat will display flag H at the finish to signify “heavy air” race conditions scoring. Lack of flag H will mean light air race conditions scoring. This scoring conditions decision will not be grounds for redress. This changes rules 62.1.

### **13 PENALTY SYSTEM**

For all classes, rule 44.1 is changed so that the Two-Turns Penalty is replaced by the One-Turn Penalty.

### **14 TIME LIMITS**

- 14.1 The time limit for each race is 3 hours.
- 14.2 Boats failing to finish within 30 minutes after the first boat of her class sails the course and finishes, or within the time limit, whichever is later, will be scored Did Not Finish (DNF) without a hearing. This changes rules 35, A4 and A5.
- 14.3 If a boat(s) racing cannot, in the judgment of the race committee, place ahead of any boat finished, the race committee may record the time and score the relative position(s) of the boat(s) racing. The boat(s) will be scored as *Finished*. The race committee will attempt to notify the boats involved by hail or by radio. This changes rule 35.

### **15 PROTESTS AND REQUESTS FOR REDRESS**

- 15.1 Protest forms are available at the main office of Columbia Yacht Club. Protests and requests for redress or reopening shall be delivered there within the protest time limit.
- 15.2 The protest time limit is 60 minutes after the last boat has finished the last race of the day.
- 15.3 Rule 63.7 is changed to include: “The race committee shall consult the PRO to verify the intent of the sailing instruction in question.”

**16 SCORING**

One race constitutes a series.

**17 SAFETY REGULATIONS**

17.1 Check-in: prior to the first race each day, after the hoist of flag L and before or with her warning signal, boats shall sail past the stern of the race committee signal boat on starboard tack, and shall hail their sail numbers and boat name.

17.2 After checking in, a boat that retires from a race shall notify the race committee as soon as practicable, regardless of whether the boat is in the vicinity of the starting area or the race course. Notify the race committee by hail or on VHF 69 and receive an acknowledgement.

**18 RADIO COMMUNICATION**

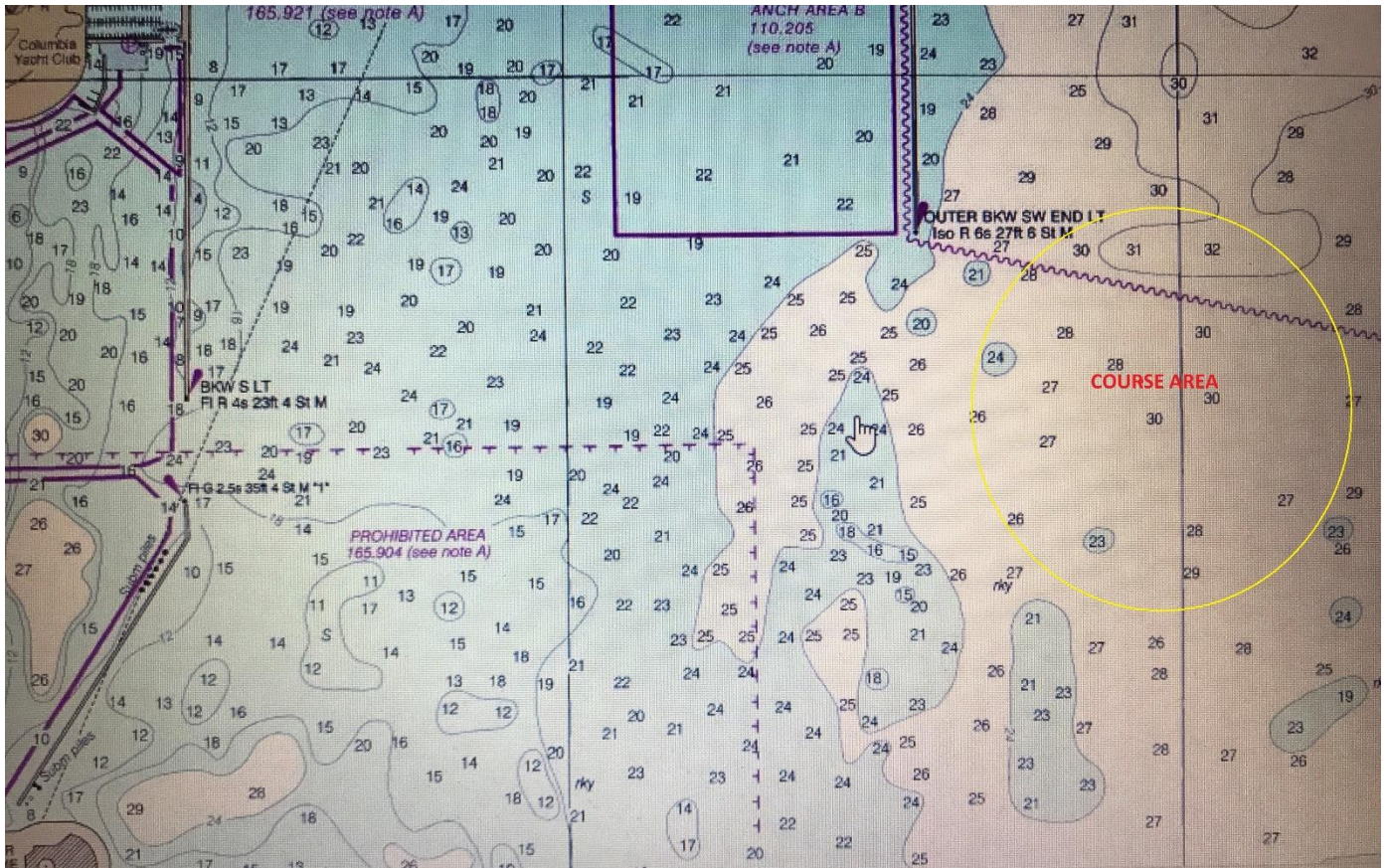
18.1 A boat shall neither make radio transmissions while racing nor receive special radio communications not available to all boats except as permitted by the Notice of Race and these Sailing Instructions.

18.2 Competitors should monitor VHF channel 69 for broadcasts made by the race committee.

**19 CONTACT**

<b>Regatta Chair</b>
<b>Mike Hettel</b>
<a href="mailto:michael.e.hettel@gmail.com">michael.e.hettel@gmail.com</a>

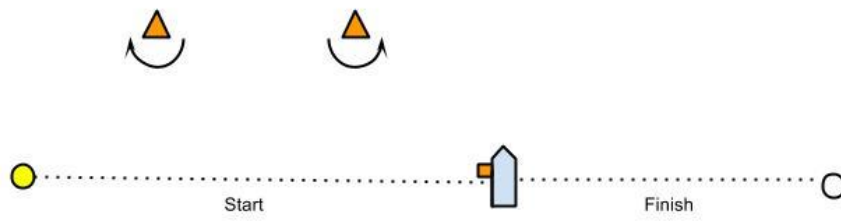
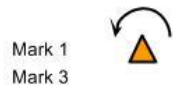
# Illustration A



# Illustration B

(Not to scale)

Course: W/L



Course: Triangle

